

SMSBOX.BE
mobile solutions

©2013 - A division of **JAAN**
internet solutions

SMSBOX.BE - MANUAL OUTLOOK PLUGIN

Index:

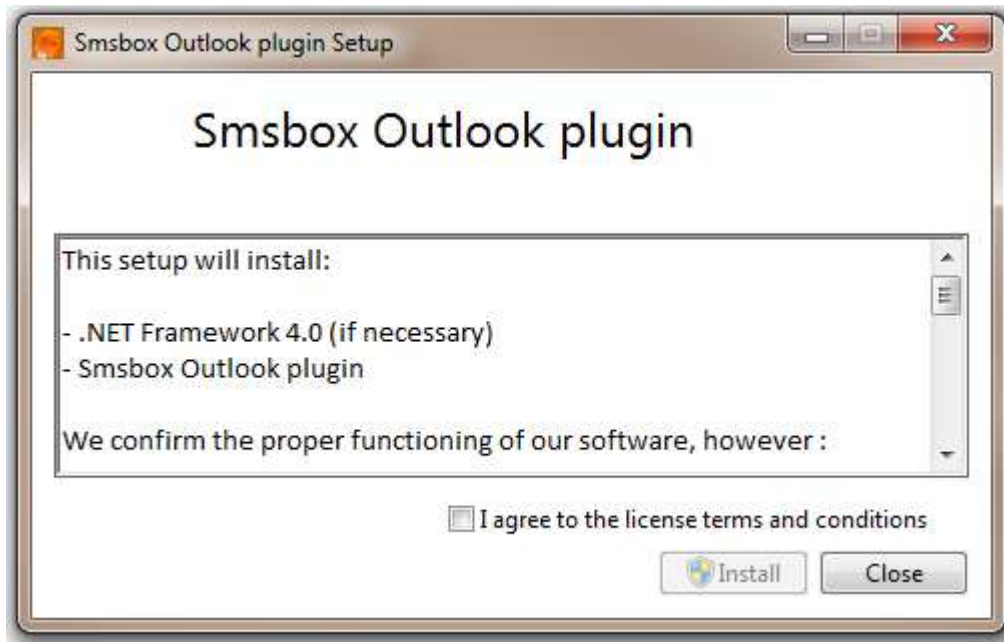
1. Download the application.....	3
2. Installation.....	3
3. Starting for the first time.....	4
3.1. Sending a message.....	6
3.2. Fixed messages.....	8
4. View logs.....	8
5. Check for updates and get support.....	9

1. Download the application

You can download the **Smsbox Outlook plugin** software at http://www.smsbox.be/download/plugin_current.zip

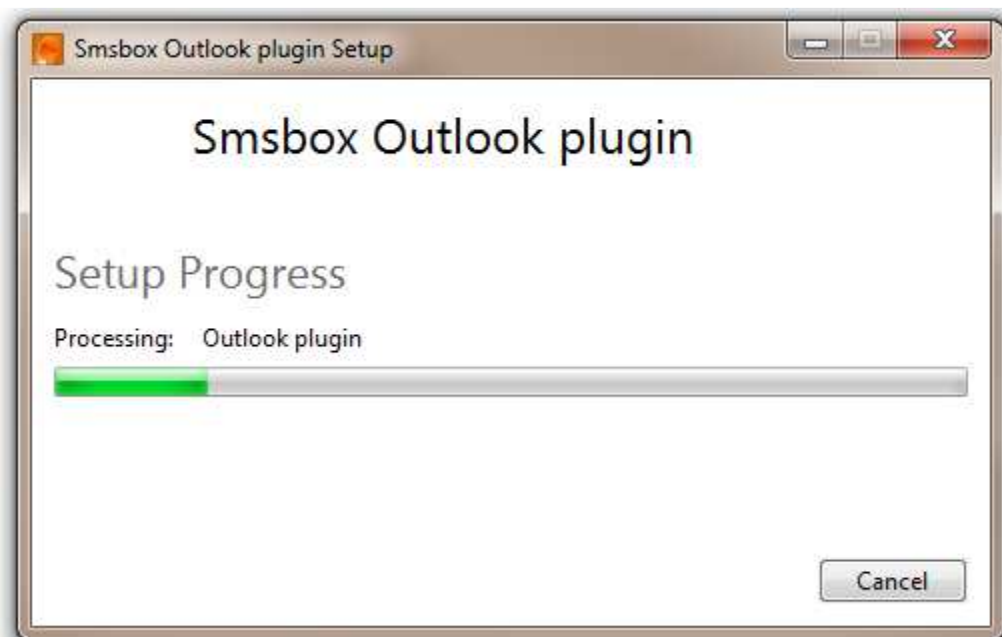
Unzip this file into any folder at your pc, and **open setuppluginXXX.exe**

2. Installation

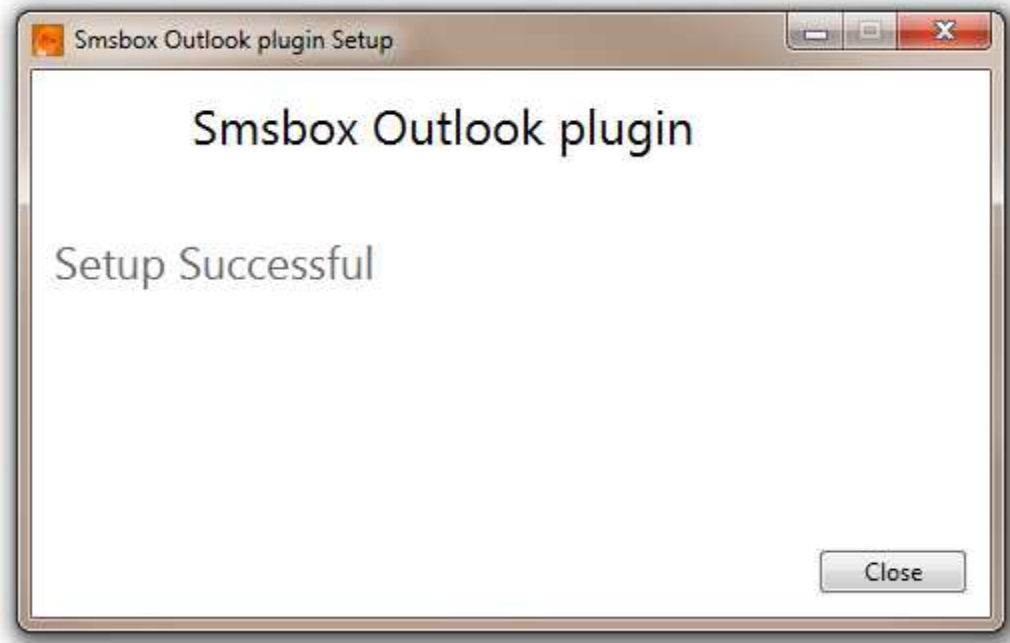


The Outlook plugin uses **.NET Framework 4.0**, this will automatically be installed if necessary.

Click on agree, and install. After the installation of .NET Framework 4.0, the **Outlook plugin Setup** will be installed.



The **Outlook plugin** will be installed at: **Program Files\Smsbox\op**.



The software is now installed and ready to launch through your **OUTLOOK** for the first time.

3. Starting for the first time



You will see a welcome dialog and asking for **your account details**.

Enter your given **username and password** and select an **email-box**.

If you don't have an account, please go to our site www.smsbox.be/cp/register.php

SenderID is your originator and standard **smsbox.be**, but you can change it to your own preference.

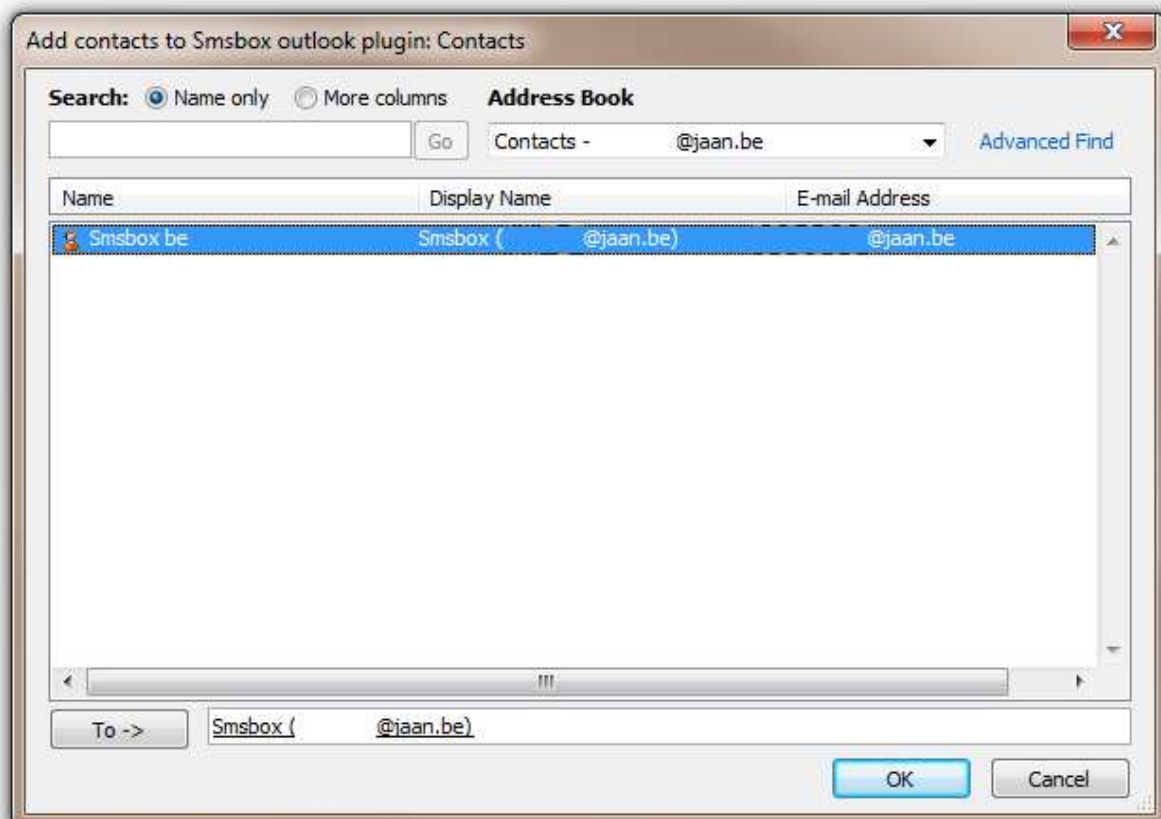
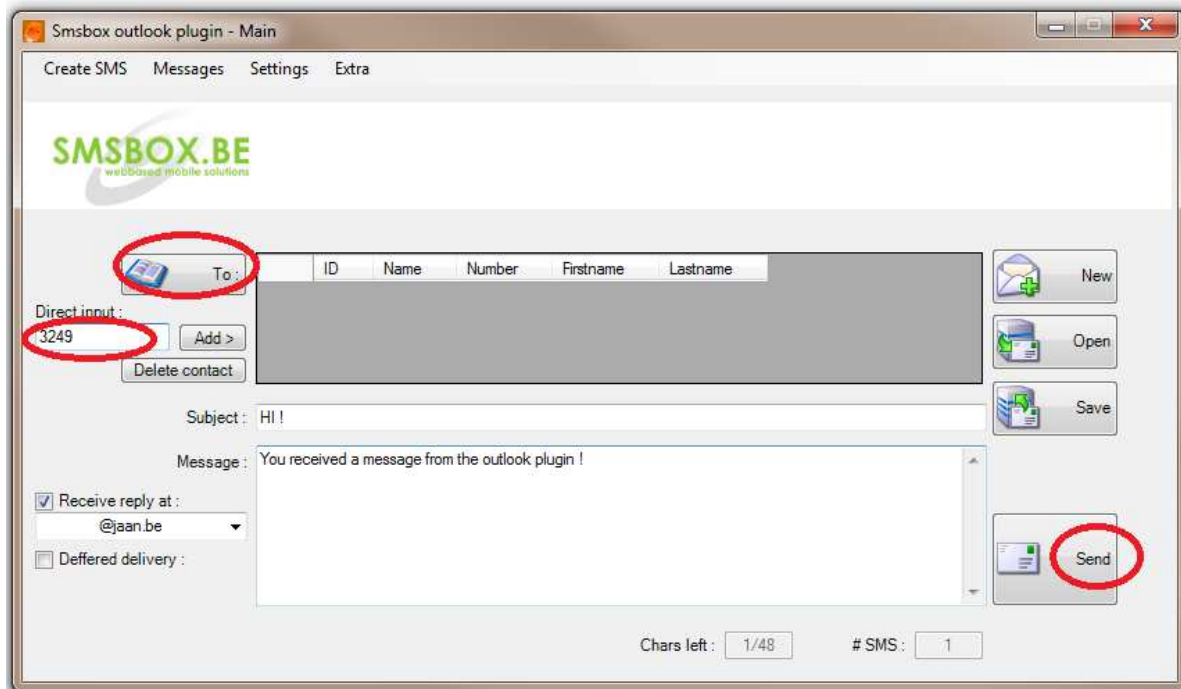
If **2-Way** is enabled, your **replied messages** will be send to your mail-box.

If you are **behind a proxy**, you have to enable this option, otherwise **Outlook plugin** might not work properly.

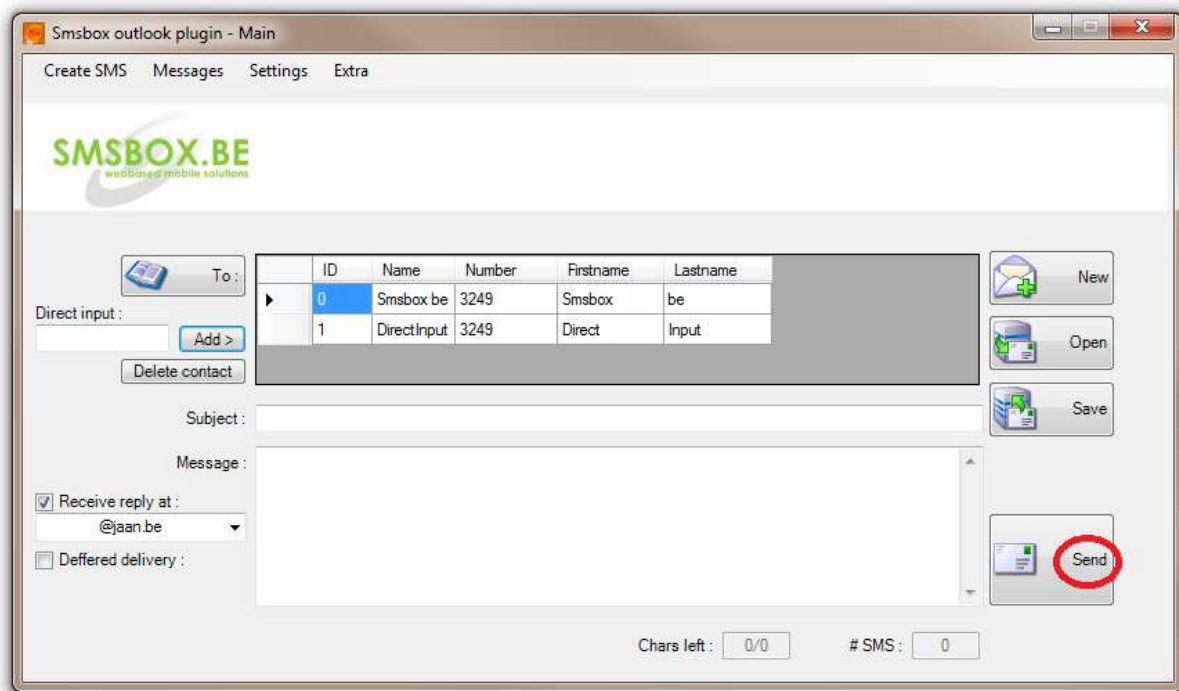
When settings are done, you can click the **save config button**.

3.1. Sending a message

If you want to send a message to a contact, you can choose between a **direct input** (for ex. 32498765432), or choose a contact from your **Outlook address book** (To-button).



Be aware ! You can only send message from you Outlook address book if you have specified a mobile-phonenummer to that contact.



You are now ready to **send your message**.

If your contact replies to your message, **you will a reply email**:

Re: Sms

Smsbox.be <+3249 @addin.smsbox.be>

Sent: do 3/10/2013 12:38

To: @jaan.be

Subject: Re: Sms

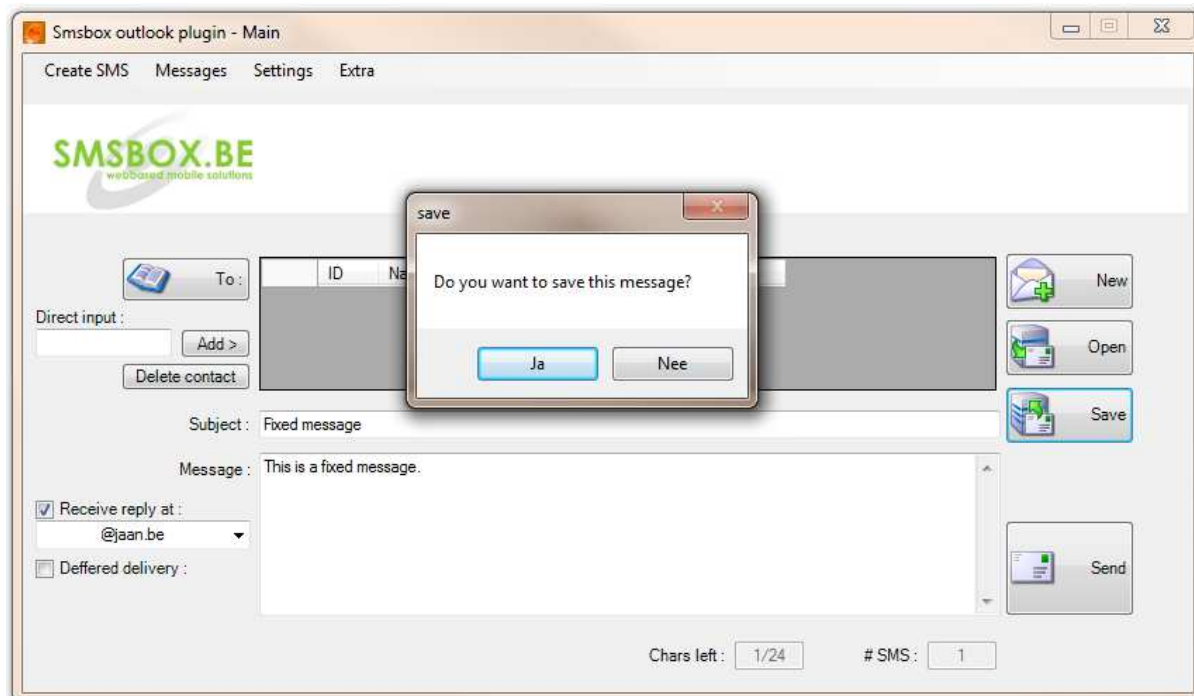
From: Direct Input <+3249 >

Message: Hi there, I've got your message !

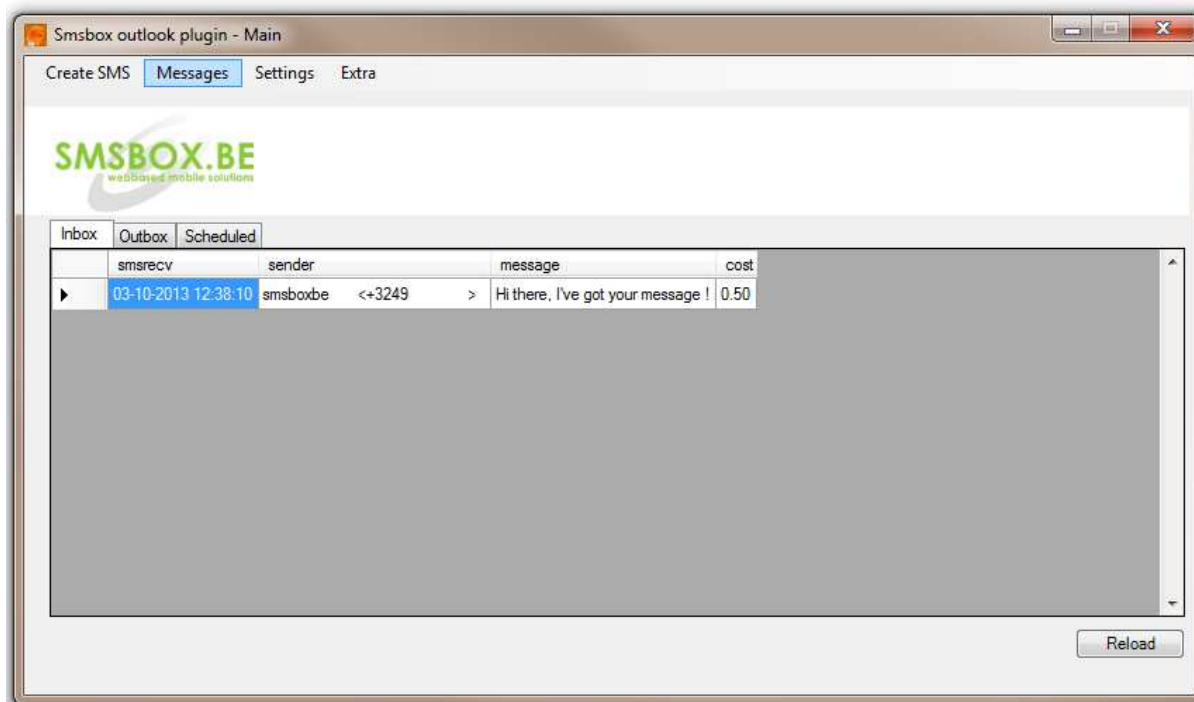
3.2. Fixed messages

You can save your message as a **fixed message** to use later.

These fixed message, are also saved to your **web-based account** !

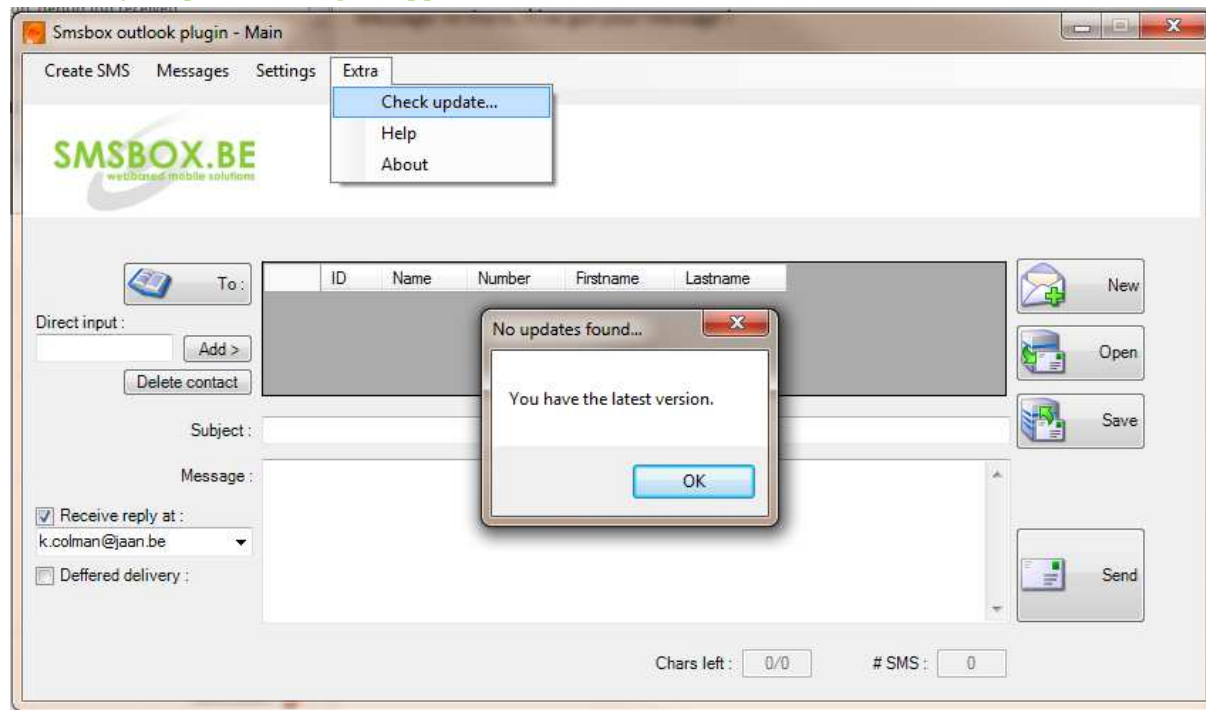


4. View logs



In your **messages logs** you can find all your messages. Separated by **Inbox**, **Outbox** and **Scheduled**.

5. Check for updates and get support



The **outlook plugin** will automatically look for updates at the **start of your Outlook** or you can check for it manually, you can do this in the **Extra menu**.

If you have found a bug, don't hesitate to contact support@smsbox.be or send us your **bug report files** (see Help menu).